

**BUILDING ELEVATION EXHIBIT**  
 HALSTON MARKET  
 DES PLAINES, ILLINOIS

2/23/2021



**GRWA**  
 LAND PLANNING  
 BIOLOGICAL CONSULTING  
 LANDSCAPE ARCHITECTURE  
 402 W. LIBERTY DRIVE  
 WHEATON, ILLINOIS 60187  
 PHONE: 630-668-7197

GARY R. WEBER  
 ASSOCIATES, INC.



Ontario  
Front Elevation

LaSalle

Kingsbury

Franklin

Regis

Ontario

F1 █  
Street Facing Elevation



Ontario  
Front Elevation

LaSalle

Kingsbury

Franklin

Regis

Ontario

F2 █  
Non-Street Facing Elevation



Left Elevation

Ontario



Right Elevation

Ontario

S1   
Street Facing Elevation




Left Elevation

Ontario



Right Elevation

Ontario

S2   
Non-Street Facing Elevation



Ontario  
Rear Elevation

Regis

Franklin

Kingsbury

LaSalle

Ontario

B1   
Alley Facing Elevation

# Preliminary Landscape Plan

# HALSTON MARKET

Des Plaines, Illinois

May 21, 2021

## CONSULTANTS:



LANDSCAPE ARCHITECT:  
**GARY R. WEBER ASSOCIATES, INC**  
 402 W. LIBERTY DRIVE  
 WHEATON, ILLINOIS 60187



CIVIL ENGINEER:  
**CAGE CIVIL ENGINEERING**  
 3110 WOODCREEK DRIVE  
 DOWNERS GROVE, ILLINOIS 60515



LOCATION MAP

SCALE: 1"=150'

## INDEX OF SHEETS

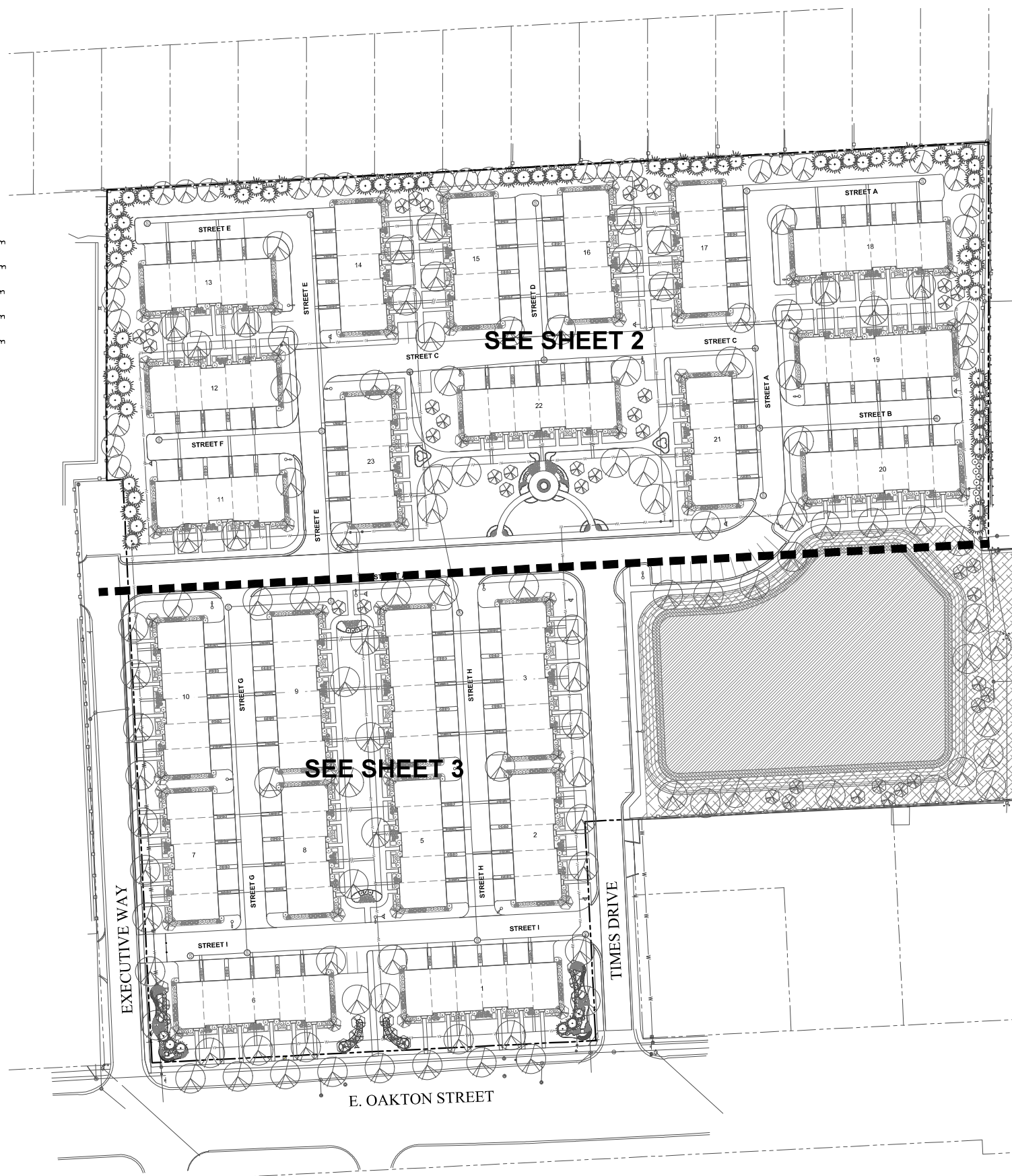
<u>SHEET NO.</u>	<u>DESCRIPTION</u>
0	COVER SHEET
1	OVERALL LANDSCAPE PLAN
2	LANDSCAPE PLAN
3	LANDSCAPE PLAN
4	TYPICAL FOUNDATION LANDSCAPE PLANS
5	MONUMENT DETAILS
6	TREE REMOVAL PLAN
7	LANDSCAPE SPECIFICATIONS



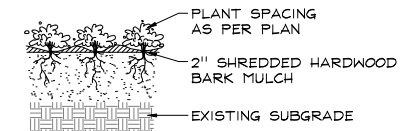
**M/I HOMES**

# REPRESENTATIVE PLANT LIST

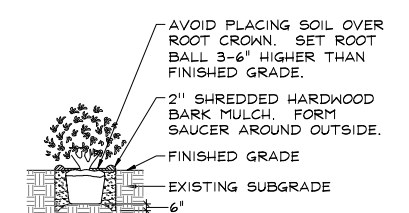
Key	Botanical/Common Name	Size	Remarks
	<b>SHADE TREES</b>		
	<i>Acer x freemanii</i> AUTUMN BLAZE MAPLE	2 1/2" Cal.	
	<i>Celtis occidentalis</i> COMMON HACKBERRY	2 1/2" Cal.	
	<i>Gleditsia triacanthos inermis</i> 'Skyline' SKYLINE HONEYLOCUST	2 1/2" Cal.	
	<i>Quercus bicolor</i> SWAMP WHITE OAK	2 1/2" Cal.	
	<i>Tilia americana</i> 'McSentry' SENTRY AMERICAN LINDEN	2 1/2" Cal.	
	<i>Ulmus carpinifolia</i> 'Regal' REGAL SMOOTHLEAF ELM	2 1/2" Cal.	
	<b>ORNAMENTAL TREES</b>		
	<i>Amelanchier grandiflora</i> APPLE SERVICEBERRY	6' Tall	Multi-stem
	<i>Betula nigra</i> RIVER BIRCH	6' Tall	Multi-stem
	<i>Cornus mas</i> CORNELIANCHERRY DOGWOOD	6' Tall	Multi-stem
	<i>Crataegus crus-galli inermis</i> THORNLESS COCKSPUR HAWTHORN	6' Tall	Multi-stem
	<i>Malus</i> 'Prairifire' PRAIRIFIRE CRABAPPLE	6' Tall	Multi-stem
	<b>EVERGREEN TREES</b>		
	<i>Abies concolor</i> WHITE FIR	6' Tall	
	<i>Picea glauca</i> 'Densata' BLACK HILLS SPRUCE	6' Tall	
	<i>Picea pungens</i> GREEN COLORADO SPRUCE	6' Tall	
	<i>Thuja occidentalis</i> 'Techny' MISSION ARBORVITAE	6' Tall	
	<b>DECIDUOUS SHRUBS</b>		
	<i>Cornus sericea</i> 'Bailey' BAILEY'S REDTWIG DOGWOOD	36" Tall	5' O.C.
	<i>Cotoneaster acutifolia</i> PEKING COTONEASTER	36" Tall	4' O.C.
	<i>Spiraea betulifolia</i> 'Ter' BIRCHLEAF SPIREA	24" Tall	3' O.C.
	<i>Syringa meyeri</i> 'Palibin' DWARF KOREAN LILAC	24" Tall	4' O.C.
	<i>Viburnum dentatum</i> ARROWWOOD VIBURNUM	36" Tall	5' O.C.
	<i>Viburnum trilobum</i> 'Hah's' HAH'S CRANBERRYBUSH VIBURNUM	36" Tall	4' O.C.
	<b>EVERGREEN SHRUBS</b>		
	<i>Juniperus chinensis</i> v. <i>sargentii</i> 'Viridis' GREEN SARGENT JUNIPER	24" Wide	5' O.C.
	<i>Juniperus chinensis</i> 'Sea Green' SEA GREEN JUNIPER	24" Wide	4' O.C.
	<i>Juniperus chinensis</i> 'Kallaya Compact' KALLAYA COMPACT PFITZER JUNIPER	24" Wide	4' O.C.
	<i>Taxus x media</i> 'Densiflora' DENSE YEW	24" Wide	4' O.C.
	<b>PERENNIALS AND ORNAMENTAL GRASSES</b>		
	<i>Coreopsis verticillata</i> 'Zagreb' ZAGREB COREOPSIS	#1	18" O.C.
	<i>Hosta sieboldiana</i> 'Frances Williams' FRANCES WILLIAMS' HOSTA	#1	24" O.C.
	<i>Hemerocallis</i> 'Happy Returns' HAPPY RETURNS DAYLILY	#1	18" O.C.
	<i>Liatris spicata</i> 'Kobold' BLAZING STAR	#1	18" O.C.
	<i>Pennisetum alopecuroides</i> 'Hornet' DWARF FOUNTAIN GRASS	#2	24" O.C.
	<i>Rudbeckia fulgida</i> 'Goldsturm' BLACK-EYED SUSAN	#1	18" O.C.
	<i>Salvia nemorosa</i> 'East Friesland' EAST FRIESLAND SALVIA	#1	18" O.C.
	<i>Sporobolus heterolepis</i> PRAIRIE DROPSIDE	#1	18" O.C.
	<b>GROUNDCOVERS</b>		
	<i>Euonymus fortunei</i> var. 'Coloratus' PURPLELEAF WINTERCREEPER	#SP4	12" O.C.
	<i>Vinca minor</i> 'Dart's Blue' DART'S BLUE PERIWINKLE	#SP4	12" O.C.



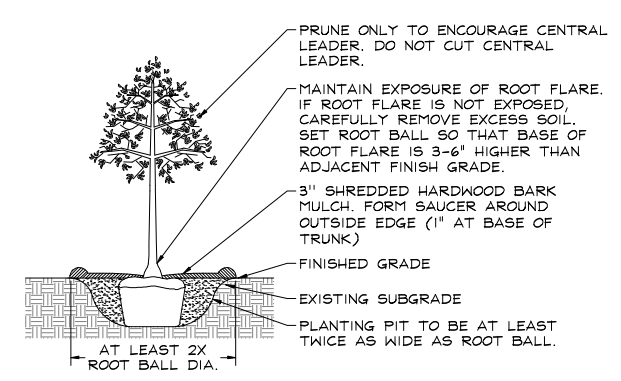
## PLANTING DETAILS



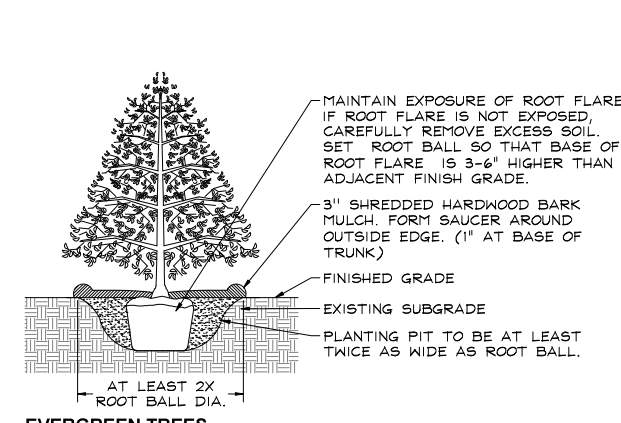
## PERENNIALS AND GROUNDCOVERS



## DECIDUOUS AND EVERGREEN SHRUBS



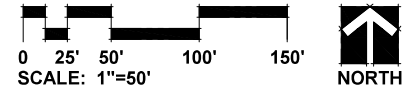
## DECIDUOUS TREES



## EVERGREEN TREES

## GENERAL NOTES

- Contractor shall verify underground utility lines and is responsible for any damage.
- Contractor shall verify all existing conditions in the field prior to construction and shall notify landscape architect of any variance.
- Material quantities shown are for contractors convenience only. The Contractor must verify all material and supply sufficient materials to complete the job per plan.
- The landscape architect reserves the right to inspect trees and shrubs either at place of growth or at site before planting, for compliance with requirements of variety, size and quality.
- Work shall conform to American Standard for Nursery Stock, State of Illinois Horticultural Standards, and Local Municipal requirements.
- Contractor shall secure and pay for all permits, fees, and inspections necessary for the proper execution of this work and comply with all codes applicable to this work.
- See General Conditions and Specifications for landscape work for additional requirements.



**GRWA**  
GARY R. WEBER  
ASSOCIATES, INC.  
LAND PLANNING  
BIOLOGICAL CONSULTING  
LANDSCAPE ARCHITECTURE  
402 W. LIBERTY DRIVE  
WEBSTON, ILLINOIS 60187  
PHONE: 630-668-7197

CLIENT  
**M/I HOMES**  
400 E. DIEHL ROAD, SUITE 230  
NAPERVILLE, IL 60563  
ENGINEER  
**CAGE CIVIL  
ENGINEERING**  
3110 WOODCREEK DRIVE  
DOWNERS GROVE, IL 60515

# HALSTON MARKET

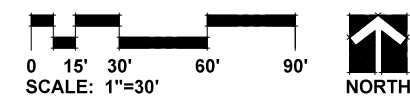
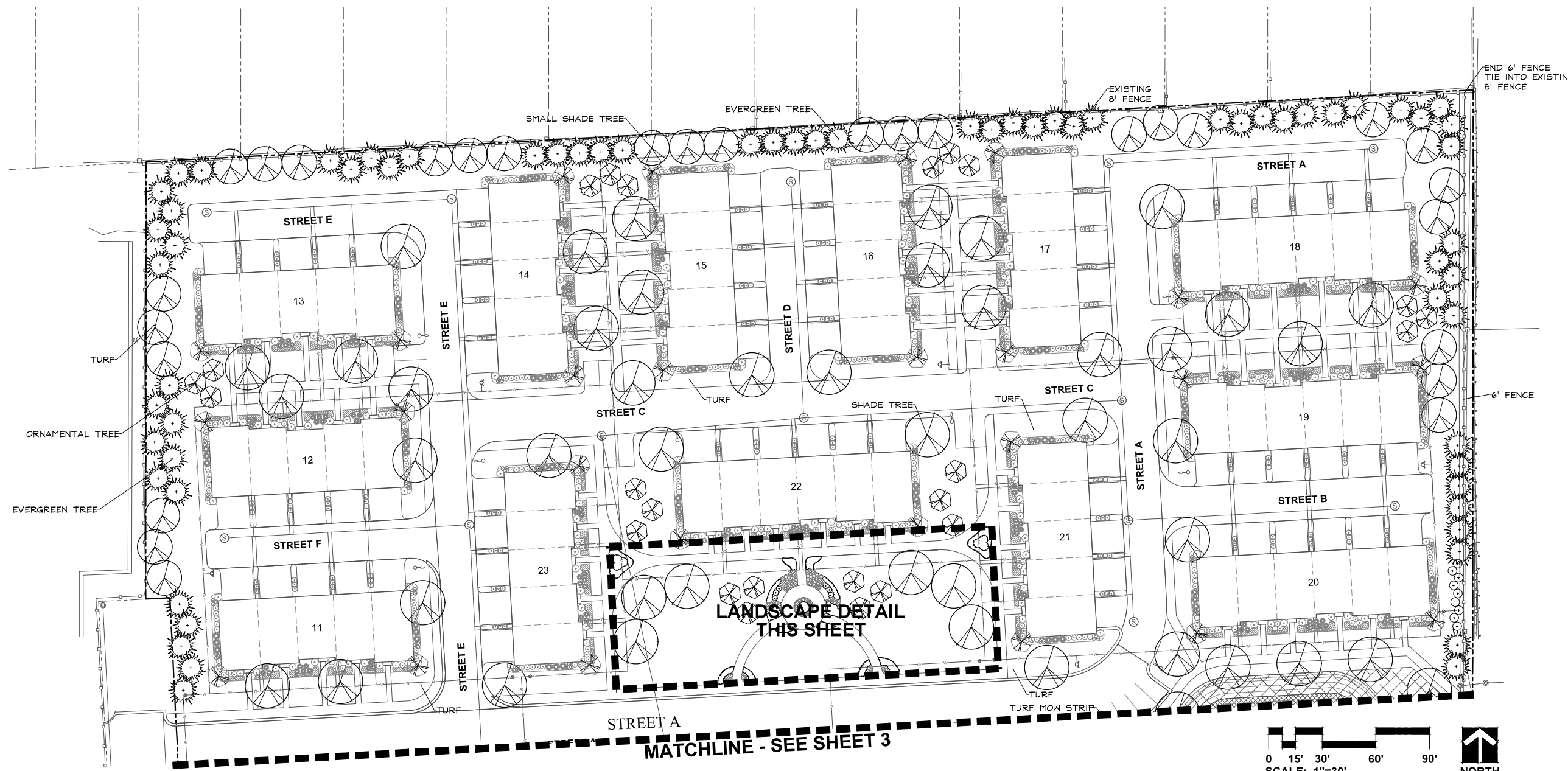
DES PLAINES, ILLINOIS

# OVERALL LANDSCAPE PLAN

REVISIONS

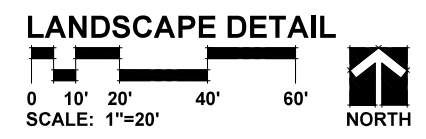
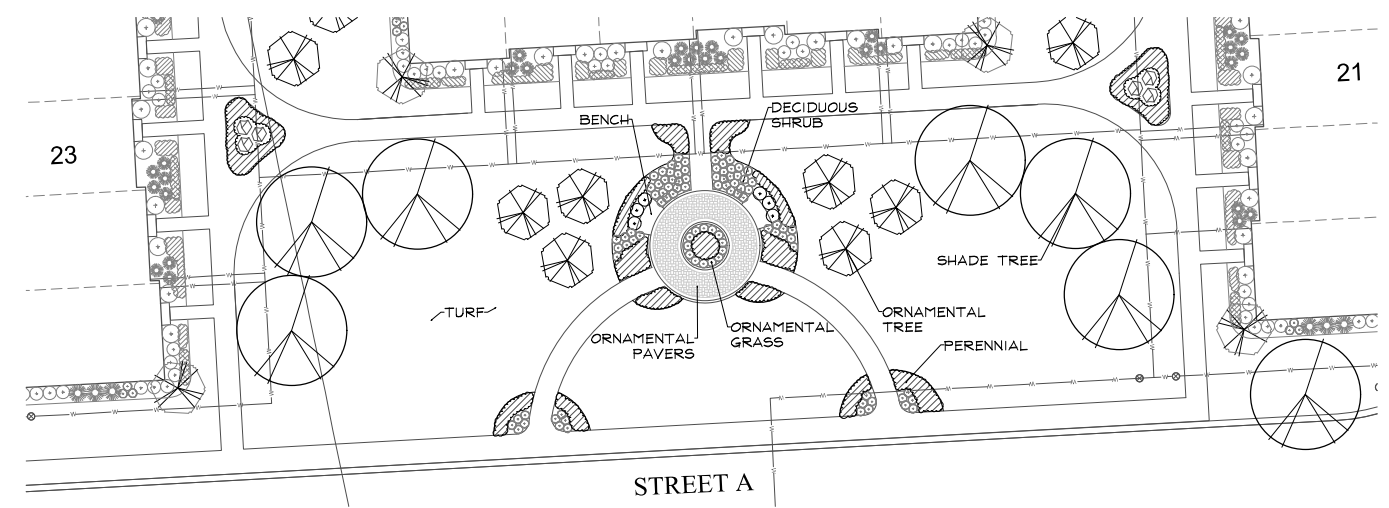
DATE	5.21.2021
PROJECT NO.	M20179
DRAWN	JLT
CHECKED	MGM
SHEET NO.	





**NATIVE AREA LEGEND**

Key	Description
	EMERGENT PLANTINGS
	WET MEADOW SEED MIX
	LOW PROFILE PRAIRIE SEED MIX



**GRWA**  
GARY R. WEBER  
ASSOCIATES, INC.  
LAND PLANNING  
BIOLOGICAL CONSULTING  
LANDSCAPE ARCHITECTURE  
402 W. LIBERTY DRIVE  
WEBER, ILLINOIS 60187  
PHONE: 630-668-7197

CLIENT  
**M/I HOMES**  
400 E. DIEHL ROAD, SUITE 230  
NAPERVILLE, IL 60563  
ENGINEER  
**CAGE CIVIL  
ENGINEERING**  
3110 WOODCREEK DRIVE  
DOWNERS GROVE, IL 60515

**HALSTON MARKET**  
DES PLAINES, ILLINOIS  
**LANDSCAPE PLAN**

REVISIONS

DATE	DESCRIPTION
5.21.2021	

PROJECT NO. M20179  
DRAWN JLT  
CHECKED MGM  
SHEET NO.



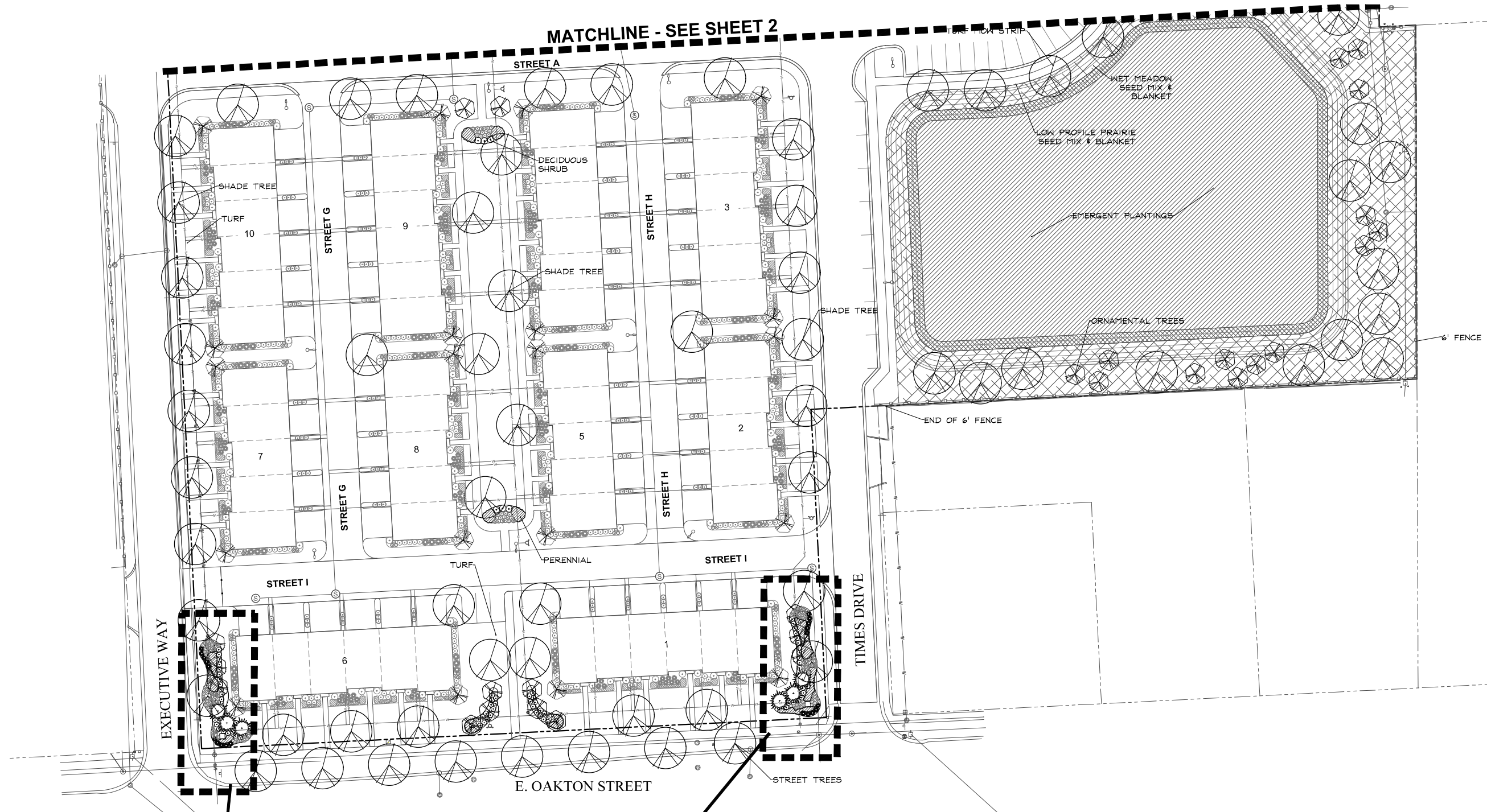


**GARY R. WEBER ASSOCIATES, INC.**  
 LAND PLANNING  
 BIOLOGICAL CONSULTING  
 LANDSCAPE ARCHITECTURE  
 402 W. LIBERTY DRIVE  
 WEBER, ILLINOIS 60187  
 PHONE: 630-668-7197

CLIENT  
  
**M/I HOMES**  
 400 E. DIEHL ROAD, SUITE 230  
 NAPERVILLE, IL 60563  
 ENGINEER  
**CAGE CIVIL ENGINEERING**  
 3110 WOODCREEK DRIVE  
 DOWNERS GROVE, IL 60515

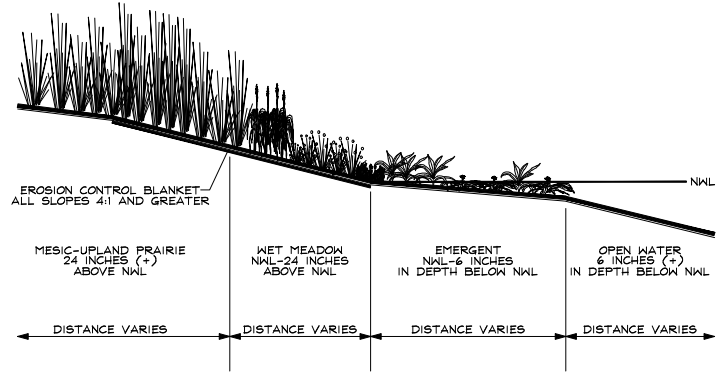
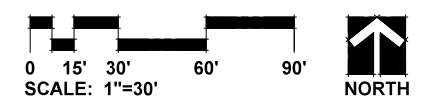
**HALSTON MARKET**  
 DES PLAINES, ILLINOIS  
**LANDSCAPE PLAN**

**MATCHLINE - SEE SHEET 2**



WEST PIER MONUMENT SEE  
 DETAIL SHEET 5

EAST PIER MONUMENT SEE  
 DETAIL SHEET 5



**NATIVE AREA LEGEND**

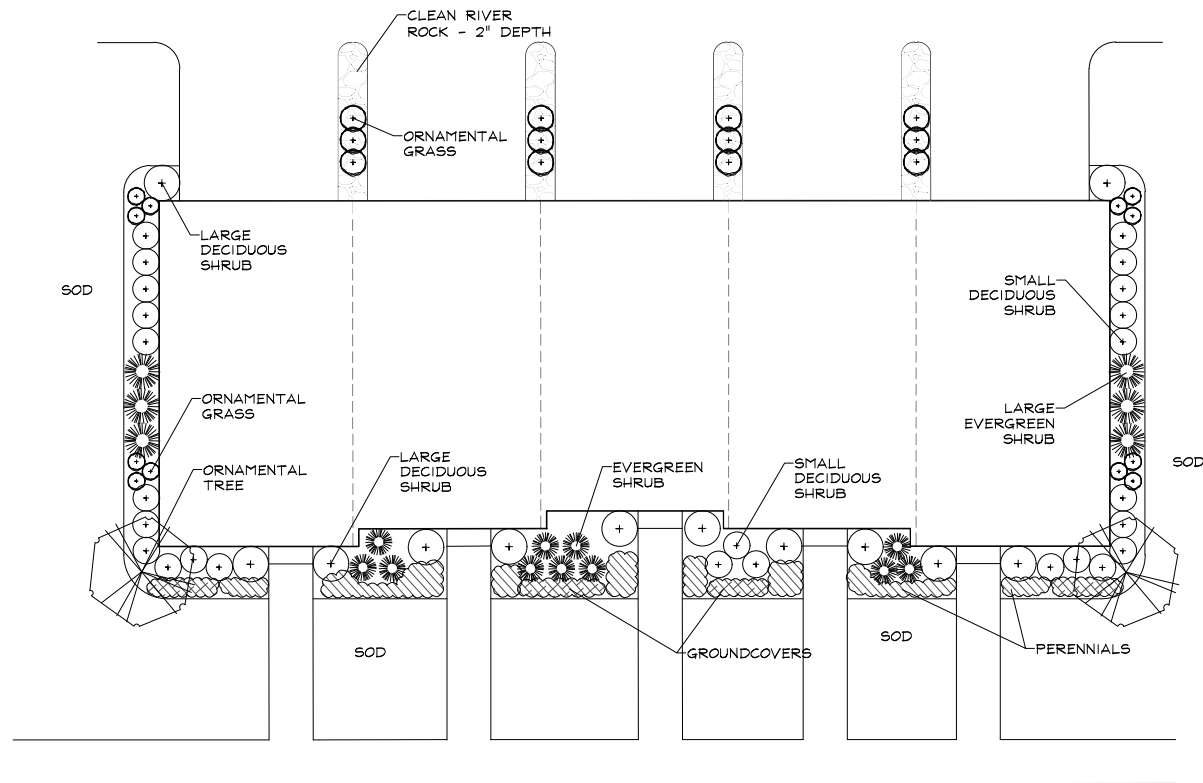
Key	Description
	EMERGENT PLANTINGS
	WET MEADOW SEED MIX
	LOW PROFILE PRAIRIE SEED MIX

REVISIONS

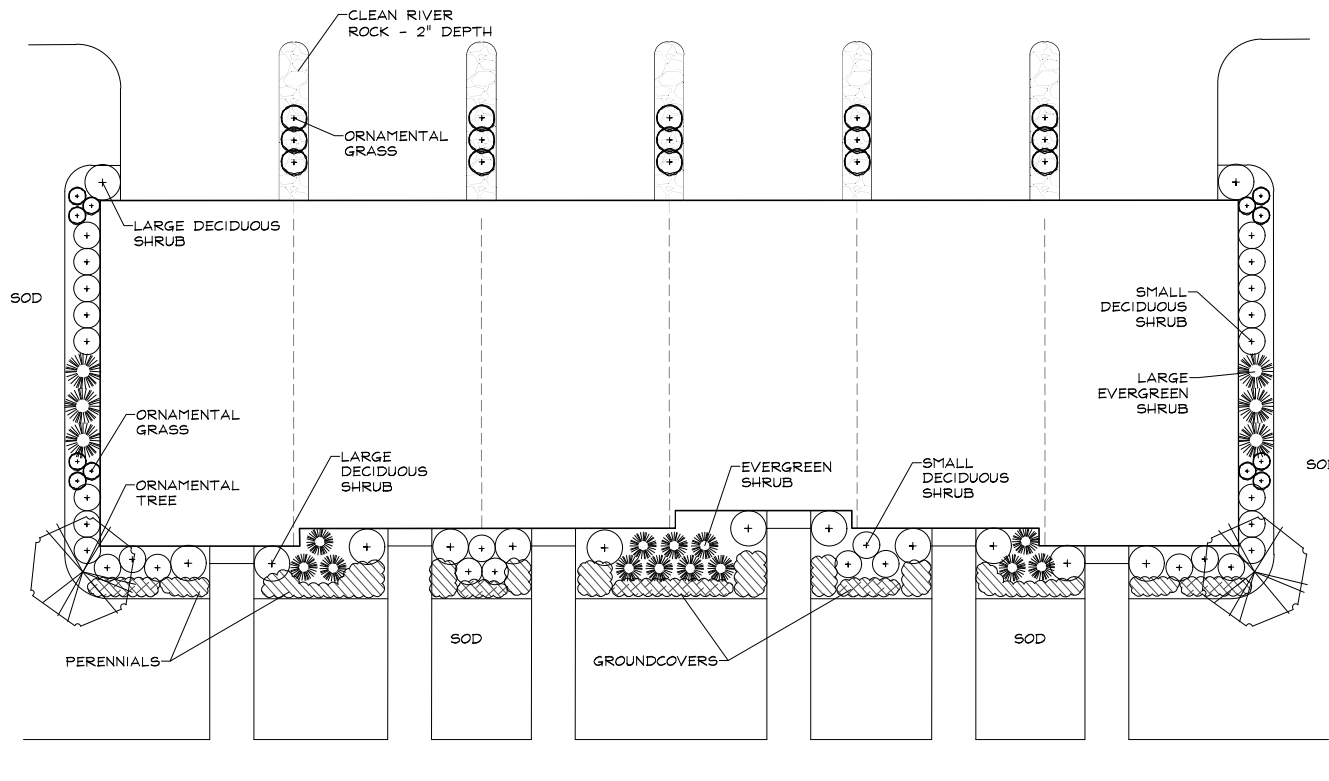
DATE: 5.21.2021  
 PROJECT NO.: M20179  
 DRAWN: JLT  
 CHECKED: MGM  
 SHEET NO.







**TYPICAL 5 UNIT TOWNHOME FOUNDATION PLAN**  
SCALE: 1"=10'



**TYPICAL 6 UNIT TOWNHOME FOUNDATION PLAN**  
SCALE: 1"=10'  
**Attachment 11**

**5 UNIT FOUNDATION PLAN (NORTH/EAST FACING) PLANT LIST**

Botanical/Common Name	Size	Remarks
<b>ORNAMENTAL TREES</b>		
Malus 'Jewelcole' RED JEWEL CRABAPPLE	6' Ht.	Clump form
Magnolia stellata 'Royal Star' ROYAL STAR MAGNOLIA	6' Ht.	Clump form
<b>DECIDUOUS SHRUBS</b>		
Cornus sericea 'Baileyi' BAILEY'S REDTWIG DOGWOOD	36" Tall	5' O.C.
Rhus aromatica 'Gro-Low' GRO-LOW SUMAC	24" Wide	4' O.C.
Hydrangea quercifolia 'Alice' OAKLEAF HYDRANGEA	36" Tall	4' O.C.
Syringa meyeri 'Palibin' DWARF KOREAN LILAC	24" Tall	4' O.C.
Viburnum 'Juddii' JUDD VIBURNUM	36" Tall	5' O.C.
<b>EVERGREEN SHRUBS</b>		
Juniperus sabina 'Blue Forest' BLUE FOREST JUNIPER	24" Wide	4' O.C.
Taxus x media 'Densiflora' DENSE YEW	24" Wide	4' O.C.
<b>ORNAMENTAL GRASSES</b>		
Calamagrostis acutiflora 'Karl Foerster' FEATHER REED GRASS	#1	24" O.C.
Pennisetum alopecuroides 'Hameln' DWARF FOUNTAIN GRASS	#1	24" O.C.
<b>PERENNIALS</b>		
Hemerocallis 'Happy Returns' HAPPY RETURNS DAYLILY	#1	18" O.C.
Hosta 'Patriot' PATRIOT HOSTA	#1	18" O.C.
Heuchera 'Palace Purple' PALACE PURPLE CORAL BELLS	#1	18" O.C.
<b>GROUNDCOVERS</b>		
Euonymus fortunei var. 'Coloratus' PURPLELEAF WINTERCREEPER	#SP4	12" O.C.

**5 UNIT FOUNDATION PLAN (SOUTH/WEST FACING) PLANT LIST**

Botanical/Common Name	Size	Remarks
<b>ORNAMENTAL TREES</b>		
Amelanchier x grandiflora APPLE SERVICEBERRY	6' Ht.	Clump form
Cornus mas CORNELIANCHERRY DOGWOOD	6' Ht.	Clump form
<b>DECIDUOUS SHRUBS</b>		
Forsythia x intermedia 'New Hampshire Gold' NEW HAMPSHIRE GOLD FORSYTHIA	36" Tall	5' O.C.
Weigela x 'Dark Horse' DARK HORSE WEIGELA	24" Wide	4' O.C.
Hydrangea paniculata 'Bulk' QUICKFIRE HYDRANGEA	36" Tall	4' O.C.
Syringa meyeri 'Palibin' DWARF KOREAN LILAC	24" Tall	4' O.C.
Viburnum dentatum ARROWWOOD VIBURNUM	36" Tall	5' O.C.
<b>EVERGREEN SHRUBS</b>		
Pinus mugo 'Stoumound' DWARF MOUNTAIN PINE	24" Wide	4' O.C.
Buxus 'Glencoe' CHICAGOLAND GREEN BOXWOOD	24" Wide	4' O.C.
<b>ORNAMENTAL GRASSES</b>		
Miscanthus sinensis 'Purpurascens' PURPLE MAIDEN GRASS	#1	24" O.C.
Sporobolus heterolepis PRAIRIE DROPS EED	#1	18" O.C.
<b>PERENNIALS</b>		
Liriope muscari 'Big Blue' BIG BLUE LILYTURF	#1	18" O.C.
Sedum 'Autumn Joy' AUTUMN JOY SEDUM	#1	18" O.C.
Achillea millefolium 'Belviolet' NEW VINTAGE VIOLET YARROW	#1	12" O.C.
<b>GROUNDCOVERS</b>		
Vinca minor 'Dart's Blue' DART'S BLUE PERIWINKLE	#SP4	12" O.C.

**6 UNIT FOUNDATION PLAN (NORTH/EAST FACING) PLANT LIST**

Botanical/Common Name	Size	Remarks
<b>ORNAMENTAL TREES</b>		
Malus 'Jewelcole' RED JEWEL CRABAPPLE	6' Ht.	Clump form
Magnolia stellata 'Royal Star' ROYAL STAR MAGNOLIA	6' Ht.	Clump form
<b>DECIDUOUS SHRUBS</b>		
Cornus sericea 'Baileyi' BAILEY'S REDTWIG DOGWOOD	36" Tall	5' O.C.
Aronia melanocarpa 'Morton' IROQUOIS BEAUTY CHOKEBERRY	24" Tall	3' O.C.
Hydrangea quercifolia 'Alice' OAKLEAF HYDRANGEA	36" Tall	4' O.C.
Syringa meyeri 'Palibin' DWARF KOREAN LILAC	24" Tall	4' O.C.
Viburnum 'Juddii' JUDD VIBURNUM	36" Tall	5' O.C.
<b>EVERGREEN SHRUBS</b>		
Juniperus sabina 'Blue Forest' BLUE FOREST JUNIPER	24" Wide	4' O.C.
Taxus x media 'Densiflora' DENSE YEW	24" Wide	4' O.C.
<b>ORNAMENTAL GRASSES</b>		
Calamagrostis acutiflora 'Karl Foerster' FEATHER REED GRASS	#1	24" O.C.
Pennisetum alopecuroides 'Hameln' DWARF FOUNTAIN GRASS	#1	24" O.C.
<b>PERENNIALS</b>		
Hemerocallis 'Happy Returns' HAPPY RETURNS DAYLILY	#1	18" O.C.
Hosta 'Patriot' PATRIOT HOSTA	#1	18" O.C.
Heuchera 'Georgia Peach' GEORGIA PEACH CORAL BELLS	#1	18" O.C.
<b>GROUNDCOVERS</b>		
Euonymus fortunei var. 'Coloratus' PURPLELEAF WINTERCREEPER	#SP4	12" O.C.

**6 UNIT FOUNDATION PLAN (SOUTH/WEST FACING) PLANT LIST**

Botanical/Common Name	Size	Remarks
<b>ORNAMENTAL TREES</b>		
Amelanchier x grandiflora APPLE SERVICEBERRY	6' Ht.	Clump form
Cornus mas CORNELIANCHERRY DOGWOOD	6' Ht.	Clump form
<b>DECIDUOUS SHRUBS</b>		
Forsythia x intermedia 'New Hampshire Gold' NEW HAMPSHIRE GOLD FORSYTHIA	36" Tall	5' O.C.
Forsythia 'nimbus' SHOW OFF SUGAR BABY FORSYTHIA	24" Tall	4' O.C.
Hydrangea paniculata 'Bulk' QUICKFIRE HYDRANGEA	36" Tall	4' O.C.
Weigela florida 'Bokrasopin' SONIC BLOOM PINK WEIGELA	24" Tall	4' O.C.
Cotinus coccinea 'NCCO!' WINECRAFT BLACK SMOKEBUSH	36" Tall	5' O.C.
<b>EVERGREEN SHRUBS</b>		
Pinus mugo 'Stoumound' DWARF MOUNTAIN PINE	24" Wide	4' O.C.
Buxus 'Glencoe' CHICAGOLAND GREEN BOXWOOD	24" Wide	4' O.C.
<b>ORNAMENTAL GRASS</b>		
Miscanthus sinensis 'Purpurascens' PURPLE MAIDEN GRASS	#1	24" O.C.
Sporobolus heterolepis PRAIRIE DROPS EED	#1	18" O.C.
<b>PERENNIALS</b>		
Phlox 'Forever Pink' FOREVER PINK PHLOX	#1	12" O.C.
Liriope muscari 'Big Blue' BIG BLUE LILYTURF	#1	18" O.C.
Hemerocallis 'Rosy Returns' ROSY RETURNS DAYLILY	#1	18" O.C.
<b>GROUNDCOVERS</b>		
Vinca minor 'Dart's Blue' DART'S BLUE PERIWINKLE	#SP4	12" O.C.

**GRWA**  
GARY R. WEBER ASSOCIATES, INC.  
LAND PLANNING BIOLOGICAL CONSULTING LANDSCAPE ARCHITECTURE  
402 W. LIBERTY DRIVE  
WEBER, ILLINOIS 60187  
PHONE: 630-668-7197

CLIENT  
**M/I HOMES**  
400 E. DIEHL ROAD, SUITE 230  
NAPERVILLE, IL 60563  
ENGINEER  
**CAGE CIVIL ENGINEERING**  
3110 WOODCREEK DRIVE  
DOWNERS GROVE, IL 60515

**HALSTON MARKET**  
DES PLAINES, ILLINOIS  
**TYPICAL FOUNDATION LANDSCAPE PLANS**

REVISIONS

DATE	DESCRIPTION
5.21.2021	

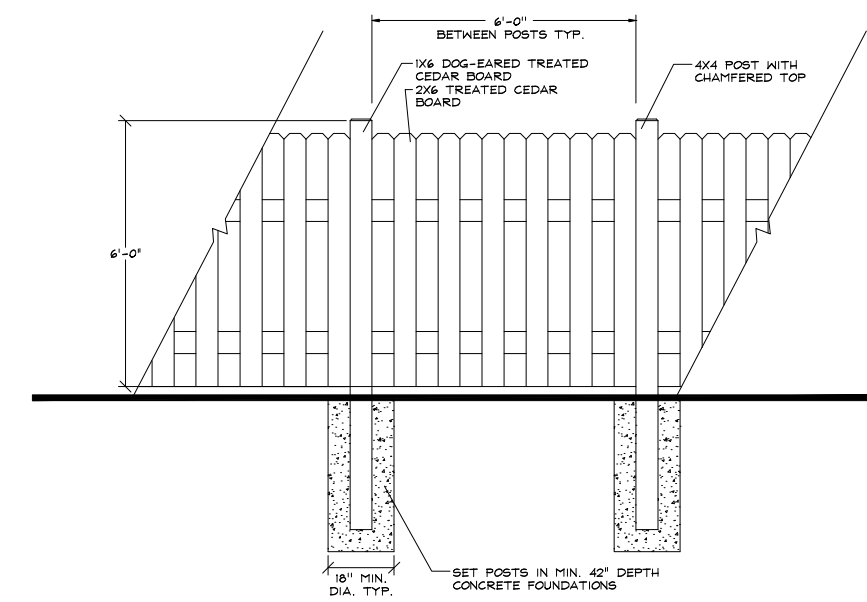
PROJECT NO. M20179  
DRAWN JLT  
CHECKED MGM  
SHEET NO.



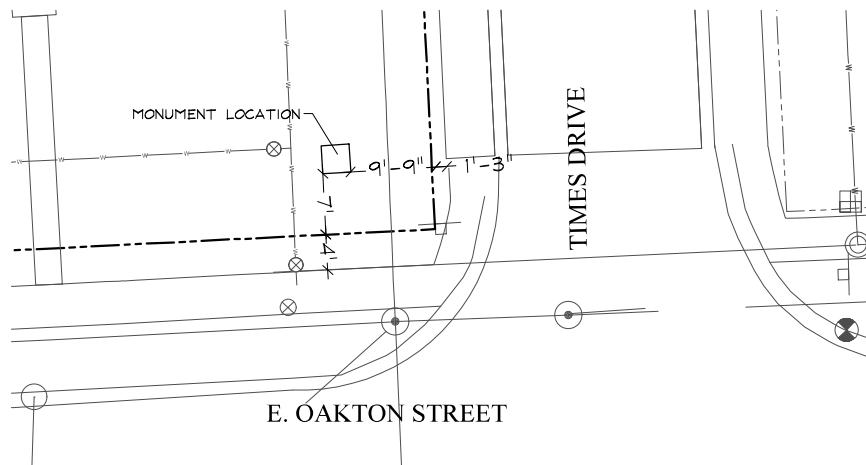
**GARY R. WEBER ASSOCIATES, INC.**  
 LAND PLANNING  
 BIOLOGICAL CONSULTING  
 LANDSCAPE ARCHITECTURE  
 402 W. LIBERTY DRIVE  
 WHEATON, ILLINOIS 60187  
 PHONE: 630-668-7197

CLIENT  
  
**M/I HOMES**  
 400 E. DIEHL ROAD, SUITE 230  
 NAPERVILLE, IL 60563  
 ENGINEER  
**CAGE CIVIL ENGINEERING**  
 3110 WOODCREEK DRIVE  
 DOWNERS GROVE, IL 60515

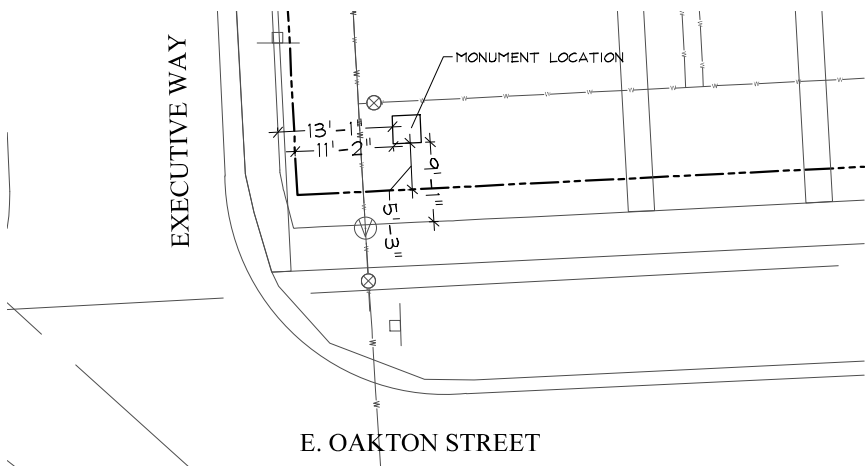
**HALSTON MARKET**  
 DES PLAINES, ILLINOIS  
**MONUMENT DETAILS**



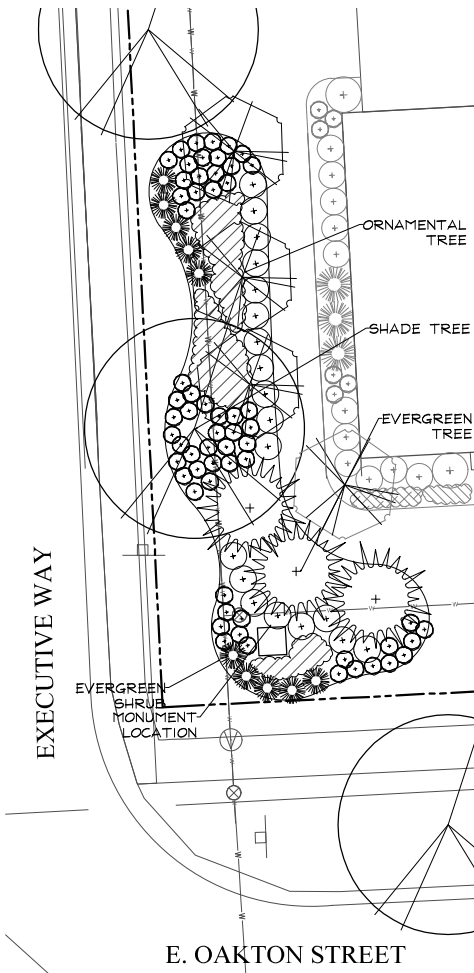
**6' FENCE DETAIL**  
 SCALE: 1/2"=1'-0"



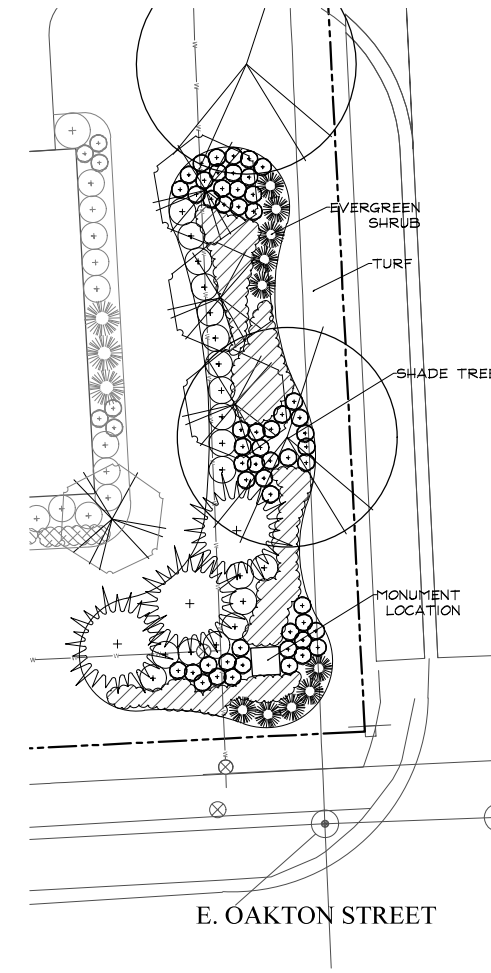
**EAST MONUMENT LAYOUT DETAIL**  
 SCALE: 1"=10'  
 NORTH



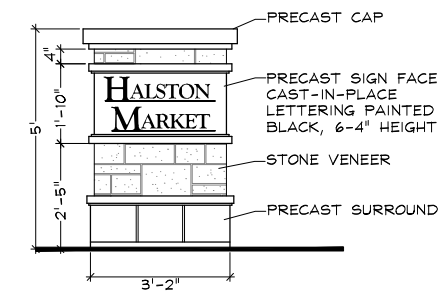
**WEST MONUMENT LAYOUT DETAIL**  
 SCALE: 1"=10'  
 NORTH



**WEST MONUMENT LANDSCAPE DETAIL**  
 SCALE: 1"=10'



**EAST MONUMENT LANDSCAPE DETAIL**  
 SCALE: 1"=10'



**MONUMENT ELEVATION**  
 SCALE: 1/2"=1'-0"

REVISIONS

DATE: 5.21.2021  
 PROJECT NO.: M20179  
 DRAWN: JLT  
 CHECKED: MGM  
 SHEET NO.



# TREE INVENTORY

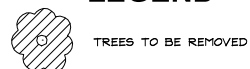
TAG NO.	SCIENTIFIC NAME	COMMON NAME	DBH (inches)	RATING	NOTES	ACTION
1454	<i>Picea abies</i>	Norway Spruce	14	Poor	Crowded	Remove
1455	<i>Acer platanoides</i>	Norway Maple	22	Fair	Leaning	Remove
1456	<i>Picea abies</i>	Norway Spruce	18	Poor	Leaning	Remove
1457	<i>Picea abies</i>	Norway Spruce	9	Poor	Dead limbs	Remove
1458	<i>Picea abies</i>	Norway Spruce	10	Poor	Crowded	Remove
1459	<i>Picea abies</i>	Norway Spruce	10	Poor	Trunk	Remove
1460	<i>Acer saccharinum</i>	Silver Maple	28	Poor	Dead crown	Remove
1461	<i>Picea abies</i>	Norway Spruce	19	Poor	Leaning	Remove
1462	<i>Picea abies</i>	Norway Spruce	8	Poor	Crowded	Remove
1463		Dead		Dead		Remove
1464	<i>Picea abies</i>	Norway Spruce	12	Fair	Crowded	Remove
1465	<i>Picea abies</i>	Norway Spruce	18	Fair	Leaning	Remove
1466	<i>Picea abies</i>	Norway Spruce	10	Poor	Leaning	Remove
1467	<i>Acer saccharinum</i>	Silver Maple	26	Poor	Leaning	Remove
1468	<i>Salix nigra</i>	Black Willow	10, 14, 8	Poor	Split risk	Remove
1469	<i>Acer saccharinum</i>	Silver Maple	34	Fair	Dead limbs	Remove
1470	<i>Ulmus americana</i>	American Elm	28	Poor	Dead limbs	Remove
1471	<i>Ulmus americana</i>	American Elm	42	Fair	Unbalanced	Remove
1473	<i>Populus deltoides</i>	Eastern Cottonwood	38, 40	Poor	Dead limbs, leaning	Remove
1474	<i>Populus deltoides</i>	Eastern Cottonwood	60	Fair	Split risk	Remove
1475	<i>Populus deltoides</i>	Eastern Cottonwood	18	Poor	Leaning	Remove
1476	<i>Populus deltoides</i>	Eastern Cottonwood	24, 25	Poor	Split risk	Remove
1477	<i>Populus deltoides</i>	Eastern Cottonwood	20	Poor	Leaning	Remove
1479	<i>Populus deltoides</i>	Eastern Cottonwood	10, 22	Poor	Split risk	Remove
1480	<i>Populus deltoides</i>	Eastern Cottonwood	22	Poor	Leaning	Remove
1481	<i>Populus deltoides</i>	Eastern Cottonwood	26, 22, 12	Poor	Split risk	Remove
1482	<i>Populus deltoides</i>	Eastern Cottonwood	9, 10	Poor	Split risk	Remove
1483	<i>Populus deltoides</i>	Eastern Cottonwood	22	Fair	Leaning	Remove
1484	<i>Populus deltoides</i>	Eastern Cottonwood	28, 14	Poor	Split risk	Remove
1485	<i>Populus deltoides</i>	Eastern Cottonwood	22, 12	Poor	Split risk	Remove
1486	<i>Populus deltoides</i>	Eastern Cottonwood	28	Fair	Leaning	Remove
1487	<i>Populus deltoides</i>	Eastern Cottonwood	30	Poor	Leaning	Remove
1488	<i>Ulmus americana</i>	American Elm	42	Poor	Split risk	Remove
1489	<i>Carpinus caroliniana</i>	American Hornbeam	6	Poor	Split risk	Remove
1489	<i>Carpinus caroliniana</i>	American Hornbeam	10	Poor	Split risk	Remove
1490	<i>Carpinus caroliniana</i>	American Hornbeam	8, 8	Poor	Split risk	Remove
1491	<i>Tilia cordata</i>	Little Leaf Linden	20	Good		Remove
Flagged	<i>Acer saccharinum</i>	Silver Maple	16	Fair	Unbalanced	Remove
1492	<i>Gleditsia triacanthos</i>	Honey Locust	22	Poor	Leaning	Remove
1493	<i>Gleditsia triacanthos</i>	Honey Locust	28	Fair	Unbalanced	Remove
1494	<i>Gleditsia triacanthos</i>	Honey Locust	28	Good		Remove
1495	<i>Acer saccharinum</i>	Silver Maple	18	Poor	Split risk	Remove
1496	<i>Morus rubra</i>	Red Mulberry	28	Poor	Unbalanced	Remove
1497	<i>Juniperus virginiana</i>	Eastern Red Cedar	20	Fair	Fair	Remove
1498	<i>Betula populifolia</i>	White Spire Birch	6, 8, 4	Poor	Split risk	Remove
1499	<i>Picea abies</i>	Norway Spruce	12	Fair	Dead limbs	Remove
Not Tagged	<i>Tilia cordata</i>	Little Leaf Linden	10	Fair	Not tagged due to fencing; across street from 1495	Remove
Not Tagged	<i>Tilia cordata</i>	Little Leaf Linden	10	Fair	Not tagged due to fencing; across street from 1495	Remove
1500	<i>Picea abies</i>	Norway Spruce	8, 10		Split risk	Remove
2601	<i>Acer saccharinum</i>	Silver Maple	14	Poor	Leaning; Dead limbs	Remove
2602	<i>Salix nigra</i>	Black Willow	15	Poor	Crowded	Remove
2603	<i>Picea abies</i>	Norway Spruce	9	Poor	Leaning	Remove
2604	<i>Picea abies</i>	Norway Spruce	12	Poor	Crowded	Remove
2605	<i>Picea abies</i>	Norway Spruce	12	Fair	Crowded	Remove
2606	<i>Picea abies</i>	Norway Spruce	10	Poor	Crowded	Remove
2607	<i>Picea abies</i>	Norway Spruce	10	Poor	Crowded	Remove
2608	<i>Picea abies</i>	Norway Spruce	8	Poor	Crowded	Remove
2609	<i>Salix nigra</i>	Black Willow	12, 10	Poor	Split risk	Remove
2610	<i>Picea abies</i>	Norway Spruce	12	Poor	Leaning	Remove
2611	<i>Acer saccharinum</i>	Silver Maple	18	Fair	Unbalanced	Remove
2612	<i>Picea abies</i>	Norway Spruce	18	Poor	Leaning	Remove
2613	<i>Picea abies</i>	Norway Spruce	18	Fair	Leaning	Remove
2614	<i>Picea abies</i>	Norway Spruce	12, 8, 9	Poor	Split risk	Remove
2615	<i>Gleditsia triacanthos</i>	Honey Locust	18	Fair	Leaning	Remove
2616	<i>Gleditsia triacanthos</i>	Honey Locust	14	Fair	Unbalanced	Remove
2617	<i>Gleditsia triacanthos</i>	Honey Locust	12	Good		Remove
2618	<i>Gleditsia triacanthos</i>	Honey Locust	6	Fair	Unbalanced	Remove
2619	<i>Gleditsia triacanthos</i>	Honey Locust	6	Fair	Crowded	Remove
2620	<i>Tilia cordata</i>	Little Leaf Linden	8	Fair	Crowded	Remove
2621	<i>Tilia cordata</i>	Little Leaf Linden	6	Poor	Unbalanced	Remove
2622	<i>Gleditsia triacanthos</i>	Honey Locust	6	Poor	Unbalanced	Remove
2623	<i>Gleditsia triacanthos</i>	Honey Locust	7	Fair	Unbalanced	Remove
2624	<i>Tilia cordata</i>	Little Leaf Linden	6	Poor	Dead limbs	Remove
2625	<i>Gleditsia triacanthos</i>	Honey Locust	7	Fair	Leaning	Remove
2626	<i>Gleditsia triacanthos</i>	Honey Locust	9	Good		Remove
2627	<i>Picea abies</i>	Norway Spruce	16	Poor	Leaning	Remove

- 1) Trees measured at 4.5 above the ground- DBH (diameter Breast Height)
- 2) All trees 6" DBH and above tagged. Dead trees (greater than 90% dead wood), shrubs, and clump form ornamental trees were not tagged
- 3) Health Rating:  
 Good- Less than 20% dead wood and sound structure  
 Fair- 20-60% dead wood, unsound structure, minor signs of disease  
 Poor- 60-90% dead wood, structural damage, heavy signs of disease  
 Dead- Greater than 90% dead wood or dead crown with resprouts only

Tree inventory taken on 02/03/2021



## LEGEND



**GRWA**  
**GARY R. WEBER ASSOCIATES, INC.**  
 LAND PLANNING  
 BIOLOGICAL CONSULTING  
 LANDSCAPE ARCHITECTURE  
 402 W. LIBERTY DRIVE  
 WHEATON, ILLINOIS 60187  
 PHONE: 630-668-7197

CLIENT  
  
**M/I HOMES**  
 400 E. DIEHL ROAD, SUITE 230  
 NAPERVILLE, IL 60563  
 ENGINEER  
**CAGE CIVIL ENGINEERING**  
 3110 WOODCREEK DRIVE  
 DOWNERS GROVE, IL 60515

# HALSTON MARKET

DES PLAINES, ILLINOIS

## TREE REMOVAL PLAN

REVISIONS

DATE	5.21.2021
PROJECT NO.	MZ0179
DRAWN	JLT
CHECKED	MGM
SHEET NO.	

